

WINDOOR[®]

OPENING POSSIBILITIES.



*HIGH PERFORMANCE
DOORS & WINDOWS*

www.WinDoorInc.com

WINDOOR®

WHO WE ARE

Our exceptional windows and doors do more than protect. They are built to beautify. To create new possibilities in design. And to keep the outside world, out of the world's most beautiful homes. Ours is a company founded on challenging convention. When others say "It can't be done," we say **"Let's find a way."**

WinDoor. craftsmanship, attention to detail, and ultra-high performance ratings have made WinDoor your impact-resistant products of choice for luxury homes and five-star resorts along the U.S. coastline for more than 15 years. It's the same elite products and quality, with It's beauty. prepared for a beast.

OUR MISSION

At WinDoor, we build high-performance doors and windows that protect and beautify, imagined and created with the highest of technical and artistic integrity.



ALUMINUM SLIDING GLASS DOORS

The Most Sought After Sliding Glass Doors In The Industry!

Featuring Series 8100 - 7000 & 6000 Custom-built to exact specifications



8100 Series: **Impact Or Non-Impact:**

Truly a mixed use product that can be found in the most prestigious homes and condominiums.

Panels have a depth of 1- 3/4" with a wider stile panel size of 4- 5/8" - Optional 8-5/8" tall bottom rail for a french door look. Featuring 1, 2, 3, 4 & 5 track capabilities.

Up to 12' high door system, pocket, multi configuration bypass, and 90-degree and 135-degree systems.

The standard handle is our aluminum Signature Series with an optional choice of the The Euro & The Contemporary Series - Handle Options See page 14



Thin Is In...

The 8100 Series Narrow Interlocking stile is only 2 inches wide giving you maximum visible glass area with unobstructed daily views.



The **"New Narrow Interlock"** for the 8100 Series Sliding Glass Door, brings a new **"Contemporary Style"** to your design capabilities.

The **"New Narrow Interlock"** allows you to enjoy an enhanced view by introducing a **2 Inch Wide Interlock** that achieves the same overall performance as the **"Original 4-5/8 Interlock"** that made the WinDoor 8100 Series the most preferred sliding glass door in the **"High Velocity Hurricane Zone"** Market.

Design professionals, architects and engineers all agree...

"WinDoor goes beyond any Sliding Glass Doors capabilities out there! I can design freely with architectural large moving window walls "

We Love it! our clients receive that special ... Way-Cool Factor feature in their home.... Phil Kean Designs

Glass Options:

Offering a wide range of low-e glass choices. Single glazed - Insulated - Non-Impact & Insulated Large & Small Missile Impact.

For more on glass options

See page 33

For screens See page 29

Detail Specs See page 33



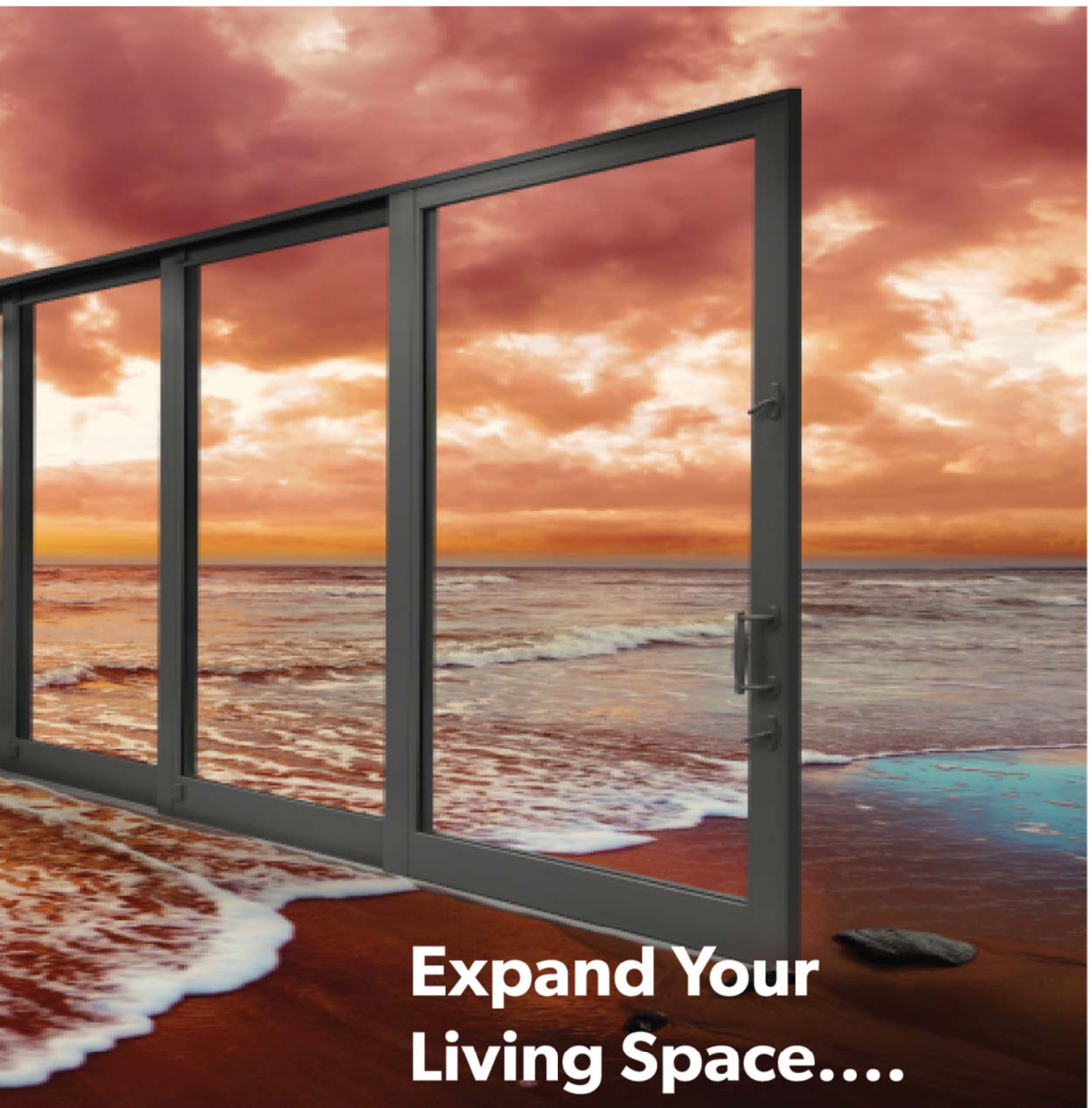
**90° AND 135°
ALUMINUM SLIDING GLASS DOORS
OPENING POSSIBILITIES.**



Custom-built to exact specifications Available 8100 & 6000 Series

The benefit of the 90 or 135 Degree
Door System ...

Is that now you have an
opening completely void of
everything but the view itself.



Expand Your Living Space....

Design capabilities...

90 or 135 Degree Corner & Pocketing Systems that can reach up 12 Feet Tall 5 Feet Wide Panels

90 or 135 Degree Corner allows the sliding glass panels to open from the center or from both sides.

ALUMINUM SLIDING GLASS DOORS



7000 Series: Impact Or Non-Impact:

Perfect For The ...
Replacement Industry ,The New Home
Builder,The Condominium Market,
Even the Hotel Resort
& Apartment Industry.

Panels have a depth of 1- 5/16"
with stile panel size of 4'
Up to 8'2" high door system,
pocket, multi configuration
bypass systems.
Featuring 2 , 3 , & 4 track capabilities.

The standard handle
is our Euro Metal series.
Handle Options See page 10

Glass Options:

Offering a wide range of low-e glass
choices. Single glazed - Insulated -
Non-Impact & Insulated Large & Small
Missile Impact.
For more on glass options See page 33
Handle Options See page 14
For screens See page 29
Detail Specs See page 35



6000 Series: Non-Impact Only :

For those time when you want an outstanding Sliding Glass Door, but don't need impact glass

Panels have a depth of 1- 3/4" with a smaller stile panel size of 2-3/4" Up to 10' Tall door system, pocket, multi configuration bypass and 90-degree and 135- degree systems. Featuring 1, 2, 3, & 4 track capabilities.

The standard handle is our Euro Metal series with an optional choice of the Signature series. Handle Options See page 10

Glass Options:

Offering a wide range of low-e glass choices. Single glazed or Insulated Non-Impact Only. For more on glass options See page 33 Handle Options See page 14 For screens See page 29 Detail Specs See page 35

ALUMINUM SLIDING GLASS DOORS



9100 Series: Impact Or Non-Impact:

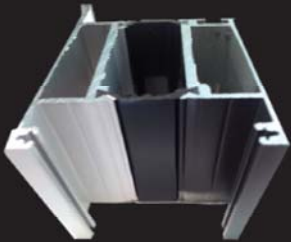
Thermally Broken Aluminum With The Latest I-Strut Technology found in the most prestigious homes and condominiums from New York to the Southern Islands.

Our Sliding Glass Doors are designed to withstand high winds that mother nature can through our way...

The heavy gauge aluminum frames have a thermal break barrier. This barrier separates the outside and inside frames to stop temperature transfer. The panels have dual interlocks to help keep them airtight.

What is a thermally broken aluminum SGD frame?

To be classified as thermally broken, a SGD must conform to the following definition by the U.S. National Fenestration Rating Council (ref: NFRC 100-2001).



"Thermal break: a material of low thermal conductivity that is inserted between members of high conductivity in order to reduce heat transfer. This will give you a Higher Performing Window.



THERMALLY BROKEN ALUMINUM SLIDING GLASS DOORS

**Featuring pocket, mult configuration bypass doors
Available spring 2017**

Size and Performance:

Large and Small Missile Impact Tested
Maximum Size of 5 x 12 panel size
Track Systems 2 - 3 & 4

The standard handle is our aluminum Signature Series with an optional choice of the The Euro & The Contemporary Series.



Glass Options:

Offering a wide range of low-e glass choices.

Non-Impact & Insulated Large & Small
Missile Impact.

For more on glass options See page 35

Handle Options See page 14

For screens See page 29

Detail Specs See page 37

90-degree and 135-degree
systems coming fall 2017.



ALUMINUM SLIDING GLASS DOORS COMPONENTS

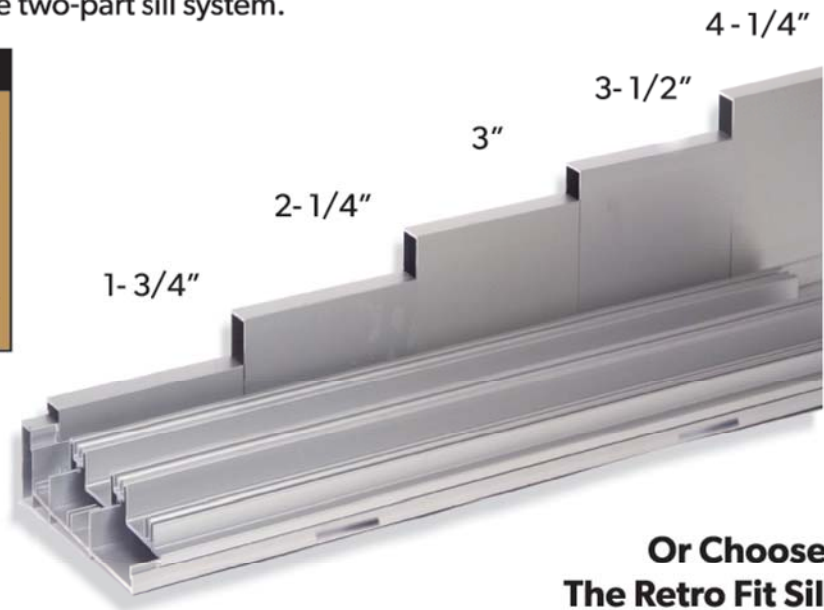


6000 & 8100 Series Sill Riser Options

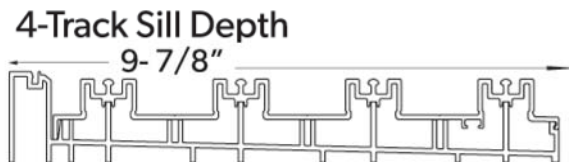
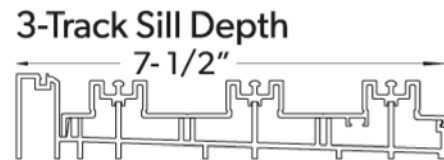
5 Different Sill Options.

Controlling Water with a variety of sill riser heights; whatever the demands of your specific location, we can provide the sill riser to match the required water performance. Featuring our unique two-part sill system.

Sill Riser Height	Certified Lab Results
1- 3/4"	6.0 psf
2- 1/4"	9.0 psf
3"	12.0 psf
3- 1/2"	15.0 psf
4- 1/4"	18.0 psf



3 Different Track Options.



**Or Choose
The Retro Fit Sill
with 3- 1/2"
Blade Riser**

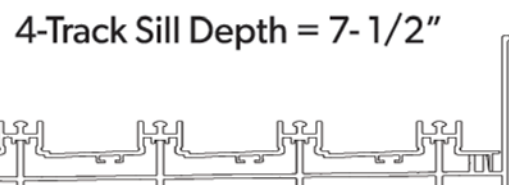
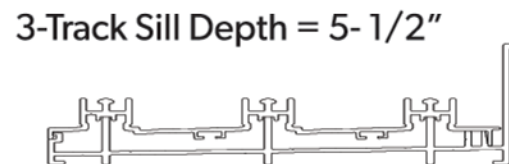
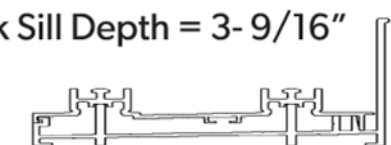
This sill can
be as small as
4 7/16" wide with no screen
or 5 7/8" wide with a screen.

7000 Series Sill Riser Options

3 Different Blade Sill Options.

Whatever the demands of your specific location, we can provide the sill riser to match the required water performance.

3 Different Track Options.



Sill Riser Height	Certified Lab Results
2- 1/2"	9.0 psf
3- 1/8"	11.26 psf
4- 1/4"	18.0 psf



ALUMINUM SLIDING GLASS DOORS COMPONENTS

Superior Standard Roller Systems:

Our Engineers have specifically designed adjustable tandem rollers with 1-5/8" or 3" Delrin® wheels by Dupont with stainless steel housings and stainless steel ball-bearings that allows the doors to operate easily and quietly. Delrin is an ABS/acetal co-polymer and has excellent dimensional stability.

The wheel has been designed so that it's contoured to perfectly match the aluminum track it rides on. This results in a wheel that tracks perfectly without lateral vibration and contributes significantly to the ease and smoothness of operation.



Standard High Performance Dual Point Mortise Lock:



Our dual point locking mechanism is the most secure lock used in the industry. It features a TWO CLAW locking System That Locks In Both Up & Down Directions.

An identical secondary lock is standard on our Sliding Glass Doors that are taller than eight feet. The secondary lock is available as an option on doors that are not eight feet tall.

All Locks are made of stainless steel that are always standard feature.

Stronger Sliding Glass Doors Dual Interlocks at the Meeting Rails:

We have two rows of INTERLOCKS that have been incorporated into our jambs so they combine to form one very strong element.

The interlocks assure that the panels actually lock together to resist any force that is placed upon them. This feature was designed to withstand pressures created by the hurricane winds.

Our Sliding Glass Doors use double rows of weather stripping along all four edges of each glass panel. The result is Superior Resistance to Air Infiltration.



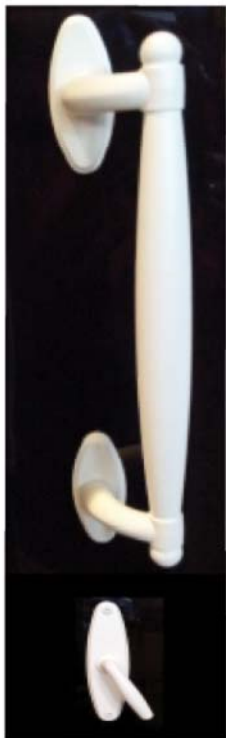
You know it is working each time you operate the door and hear the quiet "SWOOSH" sound of the wool pile against the frame. Keeping the wind where it belongs... Outside. **SUPERIOR AIR PERFORMANCE INCLUDED.**

Sliding Glass Door HANDLES

The Signature Handle - The Contemporary - The Euro Handle

Composite & Aluminum Handle

12 inches long



Optional Recessed Exterior Handle

ALL Handle Colors will match the frame color... Or Choose from Oil Rubbed Bronze - Polished Brass & Satin Nickel.

Aluminum Handle

14 inches long



Offset Handle

This Handle is custom made to order.
Satin Nickel
Oil Rubbed Bronze & Polished Chrome



Straight Handle

Also available
The Contemporary
Recessed

Note:
Will not allow-panels to bypass.



Metal Handle

10 inches long



Optional Exterior Recessed Handle
Will not allow-panels to bypass.

ALL Handle Colors will match the frame color

Bypass Flush Pull

Aluminum Handle

8 inches long

Optional Interior and Exterior
For Those Times
When You Need Your
Panels To Disappear
inside the pocket
door 100%



Exterior



Interior



The Flip-Out Edge Pull
When the door panels
are fully open back into
the pocket.

The Flip-Out Edge
Pulls out
for easy
closing

Handle At-A-Glance

Sliding Glass Door Handles	SERIES 6000	SERIES 7000	SERIES 8100
Handle Names	6000	7000	8100
The Signature Handle	Optional	N/A	Standard
The Signature Recessed Handle Will not bypass	Optional	N/A	Optional
The Euro Handle	Standard	Standard	Optional
The Euro Recessed Handle Will not bypass	Optional	Optional	Optional
The Contemporary Handle	Optional	N/A	Optional
The Bypass Flush Pull	Optional	N/A	Optional
ADA Pull Handle	Optional	Special Order	Optional
Exterior Key Lock	Optional	Optional	Optional

All Handle Colors come in our standard colors that will match the frame color. Unless custom colors are requested.

THERMALLY BROKEN ALUMINUM LIFT & SLIDE DOOR



9000 Series
Impact Or Non-Impact:

Panel Sizes Up To... 6 Feet Wide x 12 Feet Tall

Custom built to exact specifications.

WinDoor engineered the Lift & Slide Door System for extremely large openings with fewer panels.

Architects love its flexibility of design capabilities for these massive door panels that can also be fully pocketed as needed.

The Lift & Slide features outstanding weatherability than most other sliding doors.. The massive panels lift up from the sill to allow very large panels to glide easily and quietly, with no friction on the bottom track from the double V-gasket weather-seal.

Coming Spring 2017.

Flush Threshold Design:

A Flush Tracking allows easy access from the inside to the outside of your home, conference room, restaurant terrace, balconies, resorts, sporting events and museums.



**Seamless Walkway Track
with a sub-drain system.**

Featuring The highest quality european hardware, for dependability and security.that allows you to move a door panel 6 Feet Wide x 12 Feet Tall... .. with ease

Leverage Handles & Pulls



Brass
Satin Nickel
Painted Bronze
Oil Rubbed Bronze



Standard Roller Systems: Our Engineers have specifically designed tandem rollers with 1-5/8" Delrin® wheels with stainless steel housings and stainless steel ball-bearings that allows the doors to operate easily and quietly.



Lift & Slide Wheel 3000 Hour Salt Spray Test Results

The wheel has been designed so that it's contoured to perfectly match the track it rides on. This results in a wheel that tracks perfectly without lateral vibration and contributes significantly to the ease and smoothness of operation. Some panels may have up to 4 sets of our tandem rollers.



Glass Options:

Offering a wide range of low-e glass choices.
Non & Impact
Insulated Large & Small

For more on glass options
See page 33
Detail Specs
See page 37

THERMALLY BROKEN ALUMINUM TERRACE DOOR



OPENING POSSIBILITIES.

9050 Series

Impact Or Non-Impact:

Always Custom Made
Qualifying Up To
Single Panel Size 46" x 120"
Twin Doors "76" x 120"

No other hinged terrace door can capture an expansive view as a we can, thanks to our large glass options that are available

Available with our ...
Standard Bottom Rail 5 1/8 Shown below or
the Classic French Door High Bottom Rail
8 3/4 Shown to the right.



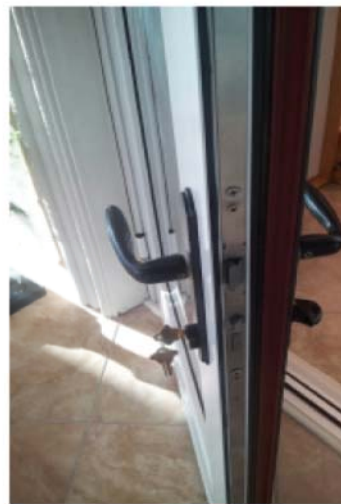
The three-point locking hardware that engages at the top, middle and bottom of the door for superior insulation and security.

Standard Colors Finishes...
White - Costa Latte - Bronze & Anodized Silver.
Custom colors and Woodgrain options always available.

Terrace Door Glass Options:

Offering a wide range of low-e glass choices.
Single glazed - Insulated Non-Impact &
Insulated Large Missile Impact.

For more on glass options See page 33
Handle Options See page 20
Detail Specs See page 36



Two-Tone Option...
Two different colors
Inside & Out!



Also Available Our Optional 3/4"
Classic Bottom Panel shown above

VINYL TERRACE DOORS

Series V-800 Out-Swing Terrace Door System Impact or Non-Impact

Always Custom Made
Sizes Up To 40" x 98"

Our Vinyl Single Terrace Door gives you the beauty of a traditional low bottom rail with all the benefits of low-maintenance vinyl.



**We Only Use Stainless Steel
In Our Multipoint Locking Systems.**

The Out-Swing style features three-point locking hardware that engages at the top, middle and bottom of the door for superior insulation and security.



Glass Options: :

Offering a wide range of low-e glass choices. Single glazed - Insulated - Non-Impact & Insulated Large Missile Impact. For more on glass options See page 33

Handle Options See page 20

Detail Specs See page 38



Terrace Door Handles

Our line of Terrace Door Handles for our Series 9050 & V-800 Doors offer an elegant finish to fit any home decor. Featuring solid brass forging high strength, intensity and durability as well as a smooth operating function.

Choose from our **EIGHT** elegant finishes crafted to fit any home decor.



Choose From Our **FIVE** Handle Styles



Our Standard Handle Verona (M151)

Our Optional Handles



Rodos (M1603)



Munchen (M112PL)



Toronto (M1020)



New Orleans (M1610)

Choose **Your Backplate**

We offer two stylish backplates



(M216N)
Featuring a contemporary beveled top & bottom profile

Standard Backplate



(M374N)
Featuring a traditional curved top & bottom profile

Optional Backplate



Shown here our standard Handle M151-Verona with M216N Backplate

Finishes shown are representative of finishes, not actual samples.

Operator hardware is displayed to show color variance with lighting and contours of the product.

THERMALLY BROKEN ALUMINUM WINDOWS

WINDOWS THAT TRANSCEND
THE ORDINARY.



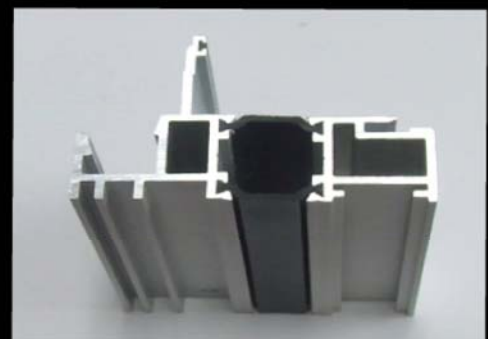
High performance double or triple glazed thermally broken aluminium windows are designed to stop the transference of heat or cold. This is important as up to 50% of heat transfer loss can be via your windows

And even more important these days...

... Save you money !

The high-performance thermal break frame provides the energy-efficiency required for Warm to Cold weather conditions.

Our Thermally Broken Aluminum Windows and are ideal for use in homes, condos, schools, restaurants, government buildings and other heavy commercial applications.



We use the I-Strut Technology a low thermal conductivity material that is inserted between two aluminum extrusions

9020 Series Impact or Non-Impact Fixed Window System

Up to 5 ft wide 10 ft Tall
4 ft wide 12 ft Tall - 8 ft wide
Custom-built to exact
specifications



Available with different top & bottom rails
to match up with other WinDoor products

We can custom paint/matched to the
color of any décor, or offer you our
Two-Tone Option... Two different colors
Inside & Out! Or choose from our
Woodgrain options.

Factory integral mulls available

The 9020 Series is the perfect sidelite
companion to the 9050 Terrace Door.



Glass Options:

Offering a wide range of low-e
glass choices. Single glazed -
Insulated - Non-Impact &
Insulated Large Missile Impact.

For more on glass options

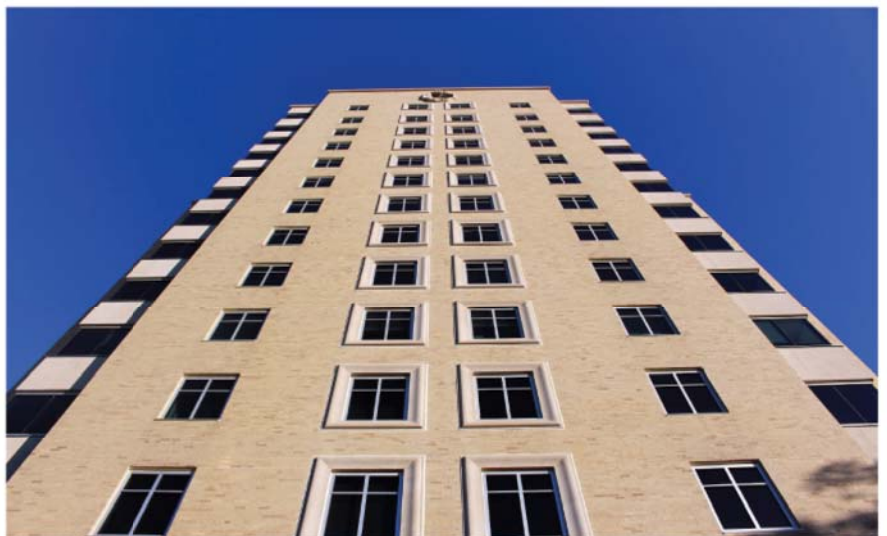
See page 33

For screens

See page 29

Detail Specs

See page 36



THERMALLY BROKEN ALUMINUM WINDOWS

Our Thermally Broken Aluminum Casement / Awning & Fixed Window offer a traditional look that is perfect for high-rise capabilities or suitable for the private residential application. Comes complete with our matching frame design and triple weather-stripping for protection against the elements.



9060 Series Impact or Non-Impact Casement Window

Maximum Size Single Vent 37" x 84"
Maximum Size Twin System 74" x 72"

Our Casement Window has the beauty and strength of a contemporary design along with heavy-duty capabilities that WinDoor Products are expected to achieve.

For more on glass options See page 33

For screens See page 29

Detail Specs See page 37



9066 Series Impact or Non-Impact Awning Window

Maximum Size Single Vent 54" x 36"
Maximum Size Twin 108" x 36"

Awning Windows are hinged at the top and open outward.

For more on glass options See page 33

For screens See page 29

Detail Specs See page 37

Our stylish, fold-down handle for both Casement & Awning Windows offers a contemporary look with less interference with Window treatments.



Offering 4 Handle Colors

* Black

* White

* Silver

* Brushed Nickel

The easy to use Single-lever multi-point locking system provides a tight closer.



9063 Series

**Impact or Non-Impact
Fixed Casement
Window**

Maximum Size 60" x 120" or 108" x 60"
Minimum Size 18" x 18"

The perfect companion for our 9060 Casement or
our 9066 Awning Window Systems.
Offering complete mulling systems.
For more on glass options See page 33
For screens See page 29
Detail Specs See page 37

This fixed Window has a unique
mull system that includes a
drip-edge, perfect for stacking
products on top of each other.



9400 Series

**Impact or Non-Impact
Single Hung Window**

All Single Hung Windows are built to your
specifications.

Max Size
54" x 102"

Minimum Size
18" X 36"

For more on glass options See page 33
For screens See page 29
Detail Specs See page 36



9470 Series

**Impact or Non-Impact
Horizontal Roller
Window**

Features our easy to glide sashes that ride
smoothly on a specially designed rolling track.

Max Size
112" x 64"

Configurations

1/4 / 1/2 / 1/4 or 1/3 / 1/3 / 1/3

For more on glass options See page 33
For screens See page 29
Detail Specs See page 36



ALUMINUM WINDOWS

4000 Series Impact or Non-Impact Single Hung Window

Sizes Single Vent 53" x 96"

Twin Vent 107" x 72"

When the traditional look of aluminum is needed, there is only one choice...

The 4000 Series combines the ruggedness of aluminum alloy with the design flexibility that gives you a unique and beautiful choice window.

For screens See page 29

Detail Specs See Page 35

Aluminum Windows Glass Options:

Offering a wide range of low-e glass choices.

Single glazed - Insulated Non-Impact & Insulated Large Missile Impact.

For more on glass options

See page 33



3000 Series Impact or Non-Impact Fixed Window

Max Sizes

5 feet wide x 9 feet high

Our fixed frame aluminum windows are available in very large sizes to produce a non-moving wall-of-glass.

For Detail Specs

See Page 35

4070 Series Impact or Non-Impact Horizontal Roller Window

Sizes 74" x 64" / 74" x 74" XO - OX
112" x 64" / 112" x 74" XOX
Our Horizontal Rolling Windows feature an elegant traditional styling with 21st-century technology built in for...
Protection & Convenience.

A horizontal roller window is a window whose moveable sash slides horizontally. These windows are composed of one stationary sash and one sash that glides to the right or left.

For screens See page 29
Detail Specs See Page 35

Aluminum Windows Glass Options:
Offering a wide range of low-e glass choices.
Single glazed - Insulated Non-Impact & Insulated Large Missile Impact.
For more on glass options
See page 33

4030 Series Impact or Non-Impact Window Wall System

Sizes Max Vent
53" x 120"

Our window wall system was designed to be able to integrate our Single Hung and our Fixed Window systems into one continuous wall of glass.

For screens See page 29
Detail Specs See Page 35



VINYL WINDOWS

Our vinyl frames our Thicker & Stronger with almost 68% more vinyl than most vinyl window & door products on the market. We have a precision corner welding process that ensures that our Vinyl Windows & Doors will resist warping & twisting over the life of the product.



V-100 Series Impact or Non-Impact Tilt & Turn Window

Sizes Up To Single 54" x 80"
Twin 84" x 80"
The V-100 Series is also rated for A.T.F.P Anti-Terrorism Force Protection.

V-101 & V-102 Series Non-Impact Only Tilt & Turn Window

Sizes Up To Single 48" x 78"
Twin 84" 78"

They are simple to use; a quarter-turn of the handle opens the window partially by tilting it inwards from the top – ideal for ventilation. However if you close it then give the handle another quarter-turn up, the window opens fully from the side – ensuring easy cleaning.



One Hand Operational Handle System

For screens See page 29
Detail Specs See page 38

Strength & Energy Efficient Vinyl Products Custom Built To Meet Exact Specifications



2011 Crystal Achievement Winner "Most Innovative Window"

Closed

Tilt In For Ventilation

Open In For Cleaning or Egress



The Tilt & Turn Window combining modern styling with the ability to provide easy ventilation and cleaning options.

Locking System



The Tilt & Turn Window employs a series of mushroom cams and striker plates which prevent the sash from being pried out.

Vinyl Windows Glass Options:

Offering a wide range of low-e glass choices.
Single glazed - Insulated - Non-Impact & Insulated
Large Missile Impact. For more on glass options
See page 35

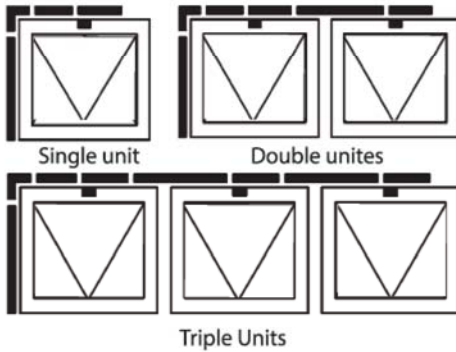
THE HY Vent Impact & Non-Impact

The HY - Vent Window allows maximum air circulation from the TOP OF THE ROOM.

The HY-Vent System
The Perfect Companion to the Vinyl Tilt & Turn Window or Fixed Vinyl Window Application.
The HY-Vent Window system is also available with screens.

For Detail Specs
See Page 38

Open One - Two Or Three
Windows at one time.



Easy To Operate Handle System

The handle is very easy to use ... Pull-Down handle to open & Pull-Up the handle to Close.

V-130 Series Fixed Field Glazed System Impact or Non-Impact

Sizes Up To 54" x 84"

This durable, vinyl fixed windows system is field glazed from the interior into the heavy duty extruded u-PVC Vinyl frame.

The perfect companion to the V-100 Series Tilt & Turn Window or as shown with the V-800 Terrace Door.

For Detail Specs
See Page 38



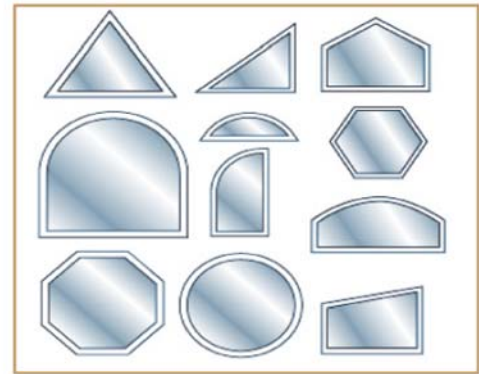
Window Options And Features

Architectural Shapes Fixed Windows

Our Designer Architectural Fixed Aluminum Thermally Broken windows are available in shapes that any architect will find suitable for any design requirements.

Our fastener covers finish off this product choice nicely making this a very clean looking Window System for any home.

See page 22 for more details under the 9020 Series Fixed Window



Muntins Patterns

We offer an attractive variety of muntins patterns for the look of individual windowpanes. We can produce a true **Simulated- Divided-Light Effect**, precisely placed and sealed between two panels of glass for easy cleaning. Decorative muntins on the outside of the glass add distinctive character to your Sliding Glass Doors or Windows without jeopardizing your view

Both of our muntin profiles are the same height and can be fabricated to intersect with one another.



Colonial Prairie 4 Over One



The minimum radius we can bend a muntin to is 9.5" for a 19" diameter

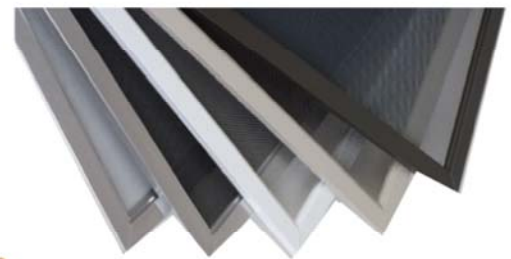


Flat Bar Simulated Divided Lite Sculptured
Internal or external muntins available
Ask Your WinDoor Dealer for details.

Standard Screen Offerings

WinDoor screens are engineered to provide a clear view without sacrificing strength and durability. Our screen allows more natural light and dramatically improves the air flow.

All screens are made of durable, fire-retardant fiberglass yarns that are smaller than standard screen yarns. Yet slightly stronger than most common screen mesh found in the industry, therefore is ideal for those large openings.



Optional Mini-Blinds Between Glass:

Tilt Only Blinds

Operable by magnet, the **Between Glass Blinds™** Tilt Only panel offers a standard integral blind system that tilts the slats from open to close with the slide of a magnet.



- 1) Eliminates Excess Dust & particles In The Air.
- 2) Provides For Room Privacy as Needed.
- 3) Reduces Housekeeping & Maintenance Task.

Some Restrictions Apply
Check For Product Availability

Open

Closed

Colorful Choices Chart

We recognize the demand from home owners and designers for more diversified color options ...

Aluminum Products Standard Paint Colors

Aluminum Standard & Paint Colors	6000 SGD	7000 SGD	7050 SGD	8100 & 9100 SGD	3000 FX	4000 SH	4030 WW	4070 RW	9020 FX	9050 TD	9060 CA	9063 FX	9066 AW	9400 SH	9470 HR	9000 LSD
White	●	●	●	●	●	●	●	●	●	●	●	●	●	●	●	●
Bronze	●	●	●	●	●	●	●	●	●	●	●	●	●	●	●	●
AAMA 2605 Hatteras White		●	●	●	●	●	●	●	●	●	●	●	●	●	●	●
AAMA 2605 Bermuda Bronze		●	●	●	●	●	●	●	●	●	●	●	●	●	●	●
AAMA 2605 Boca Tone				●												
AAMA 2605 Caribbean Creme				●												
AAMA 2605 Costa Latte				●						●						
Clear Anodized		●	●	●	●	●	●	●	●	●	●	●	●	●	●	●
Custom Woodgrain Colors																
Scandinavia Cherry				●					●	●	●	●	●	●	●	●
Honduras Mahogany				●					●	●	●	●	●	●	●	●
European Birch				●					●	●	●	●	●	●	●	●
Himalaya Walnut				●					●	●	●	●	●	●	●	●

Our Standard Vinyl Color Is White / Laminated Colors Are Available

The colors shown here are as close as possible to the actual colors offered within the limitations of color on paper reproduction. Samples are available upon request.

Custom Color Options ... Available for all of our products

- Custom-Matched Colors: We offer custom paint options that can be matched to any color decor.

Two Tone Color Options:



We Can Even Accomplish... The Sought After Two Tone Process "Different Colors In & Out"



**WE LET THE
PRODUCT
SPEAK FOR
ITSELF...**



DSDG ARCH

To View
More photos
Scan this QR code
with your phone.





Phil Kean Designs

Welcome to WinDoor.
We envision.
We invent.
We advance.
We open possibilities.



GLASS OPTIONS



Glass Options:

Impact/Security or Non-Impact Glass Options
From Low-e to triple glazed options to architectural colored glass.

WinDoor has a wide variety of glass choices to choose from Clear - Gray - Blue - Bronze & Green just to name a couple of our most popular Low-e glasses.

ENERGY PERFORMANCE GLASS...
COOLER **WARMER**
In Summer **In Winter**

Low-E Glass reflects the sun's heat away in summer - and reflects interior warmth back into your home in winter.

LOW-E GLASS TECHNOLOGY...

With the advent of Low-E coatings on glass, what was once an uncomfortable door or window to sit next to is now a comfortable place to sit.

Low-E Coatings reflect the unwanted heat of the sun away from your living space.



Sitting next to the Sliding Glass Door, Window or Terrace Door with Low-e glass...
No Longer Means You're in the Hot Seat!

We even meet the Turtle Code Requirements.

This ordinance exists to protect Sea Turtles along the coastline during the nesting season by restricting the amount of light that can be permitted through Windows and Doors. The New Born Hatchling Sea Turtles are guided to move toward the water by the light of the shining moon.

The artificial lighting that can come from the windows & doors can confuse the hatchlings, causing them to turn toward the light and not the ocean. Please contact Your WinDoor Dealer for more details.





**SOLUTIONS WHERE NONE MAY
HAVE PREVIOUSLY EXISTED**

Portfolio Detailed Specs

Aluminum Sliding Glass Doors

6000 Series - Non -Impact Only - Any Panel Configuration including Pockets - Unlimited Number of Panels - bypass
90 & 135 Degree Corner Doors

Sill Depth	Max Panel Size	Glazing	Riser Water Performance	Performance	Certifications
2-track 5-1/8"	5 feet wide x	Single Glazed	1 3/4" = 6.75 Lbs	Non-Impact Up to	Florida Product Approval
3-track 7-1/2"	10 feet high	Insulated	2 1/4" = 9 lbs	+100 / - 100 psf	ASTM
4-track 9-7/8"		Non-Impact Only	3" = 12 lbs		
			3 1/2" = 15 lbs		
			4 1/4" = 18 lbs		

7000 Series - Impact & Non - Impact Any Panel Configuration including Pockets - Unlimited Number of Panels - Bypass Doors

Sill Depth	Max Panel Size	Glazing	Riser Water Performance	Performance	Certifications
2-track 3 9/16"	5 feet wide x	Single Glazed	2 1/2" = 9 Lbs	Non-Impact	Miami-Dade NOA
3-track 5-1/2"	8 feet 2 inches	Insulated Non-Impact	3 1/8" = 11.25 lbs	and Impact Up to	Florida Product Approval
4-track 7-1/2"	high	Insulated LM		+75 / - 75 psf	TDI Approval
		Impact			ASTM

7000 H.P. Series - Impact & Non - Impact 2 track No-Screen & 3 track with Screen - By Pass Configuration Only.

Sill Depth	Max Panel Size	Glazing	Riser Water Performance	Performance	Certifications
2-track 3 9/16"	4 feet wide	Single Glazed	2 1/2" = 9 Lbs	Non-Impact Up to	Miami-Dade NOA
3-track 5-1/2"	8 feet 2 inches	Insulated Non-Impact	3 1/8" = 12 lbs	+80 / - 80 psf	Florida Product Approval
4-track 7-1/2"	high	Insulated LM	4 1/4" = 18 lbs	Impact Up to	TDI Approval
		Impact		+80 / - 90 psf	ASTM

8100 Series - Impact & Non - Impact Any Panel Configuration including Pockets - Unlimited Number of Panels - bypass
90 & 135 Degree Corner Doors

Sill Depth	Max Panel Size	Glazing	Riser Water Performance	Performance	Certifications
2-track 5-1/8"	4 feet wide x	Single Glazed	1 3/4" = 6.75 Lbs	Non-Impact Up to	Miami-Dade NOA
3-track 7-1/2"	12 feet high	Insulated Non-Impact	2 1/4" = 9 lbs	+100 / - 100 psf	Florida Product Approval
4-track 9-7/8"	5 feet wide x	Insulated LM	3" = 12 lbs	Impact Up to	TDI Approval
	10 feet high	& SM Impact	3 1/2" = 15 lbs	+125 / - 150 psf	ASTM
			4 1/4" = 18 lbs		

Aluminum Fixed Windows

3000 Series - Fixed Window - Impact & Non - Impact

Max Size	Frame Depth	Glazing	Performance	Water	Frame Options	Certifications
5 feet wide x	3 1/2 inches	Single Glazed	Non-Impact Up to	Performance	Equal Leg - Yes	Miami-Dade NOA
9 feet high		Insulated Non-Impact	+165 / - 165 psf	30 lbs	Fin Frame - Yes	Florida Product Approval
Minimum Size		Insulated LM	Impact Up to		Flange Frame - Yes	TDI Approval
12" x 12"		& SM Impact	+135 / - 135 psf			ASTM

Aluminum Operable Windows

4000 Series - Single Hung Window - Impact & Non - Impact

Max Size	Frame Depth	Glazing	Performance	Water	Frame Options	Certifications
Single Vent	3 1/2 inches	Single Glazed	Non-Impact Up to	Performance	Equal Leg - Yes	Miami-Dade NOA
53" x 96"		Insulated Non-Impact	+120 / - 120 psf	22.5 lbs	Fin Frame - Yes	Florida Product
Factory Twins		Insulated LM	Impact Up to		Flange Frame - Yes	Approval
107" x 76"		& SM Impact	+120 / - 120 psf			TDI Approval
Minimum Size 16" x 22"						ASTM

4070 Series - Horizontal Rolling Window - Impact & Non - Impact

Max Size	Frame Depth	Glazing	Performance	Water	Frame Options	Certifications
Non-Impact	3 1/2 inches	Single Glazed &	Reinforced Up to	Performance	Equal Leg - Yes	Miami-Dade NOA
& Impact		Insulated	+90 / -150 (74" high)	13.5 lbs	Fin Frame - No	Florida Product
74" x 64" / 74" x 74" XO - OX		Non-Impact	Non- Reinforced		Flange Frame - Yes	Approval
112" x 64" / 112" x 74" XOX		And LM & SM Impact	+90 / - 90 (64" high)			TDI Approval
Minimum Size						ASTM
24" x 16" XO or OX / 48" x 16" XOX						

4030 Series - Window Wall System - Single Hung & Fixed Window System - Impact & Non - Impact

Max Size	Frame Depth	Glazing	Performance	Water	Frame Options	Certifications
53" x 120"	3 1/2 inches	Single Glazed &	Non-Impact Up to	Performance	Equal Leg - Yes	Florida Product
Minimum Size		Insulated	+135 / - 135 psf	18 lbs	Fin Frame - Yes	Approval
16" x 60"		Non-Impact	Impact Up to		Flange Frame - Yes	TDI Approval
		And LM & SM Impact	+120 / - 150 psf			ASTM

Portfolio Detailed Specs

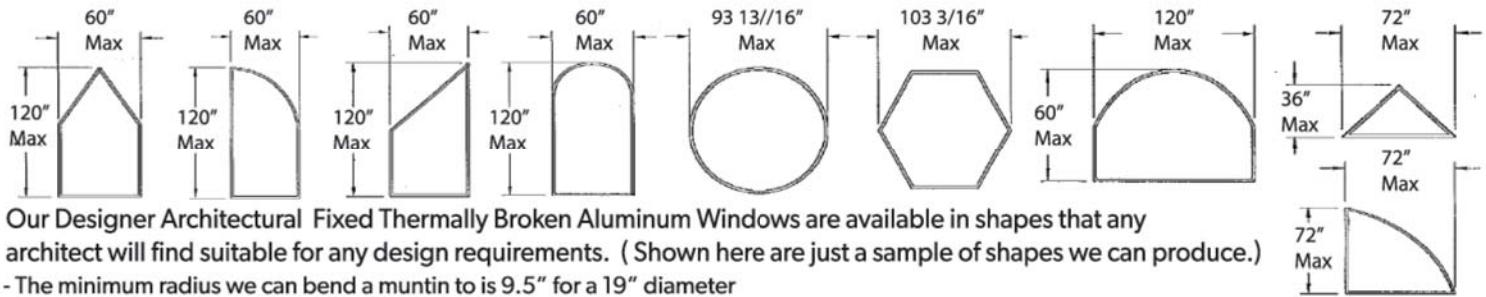
Thermally Broken Aluminum Fixed Windows

9020 Series - Fixed Window - Impact & Non - Impact

Max Size	Frame Depth	Glazing	Performance	Water	Frame Options	Certifications
96" x 72"	3 1/4 inches	Single Glazed &	Non-Impact Up to	Performance	Equal Leg - Yes	Miami-Dade NOA
60" x 120"		Insulated Non-Impact	+150 / - 150 psf	30 lbs	Fin Frame - Yes	Florida Product
144" x 72"		And LM & SM Impact	Impact Up to		Flange Frame - Yes	Approval
Minimum Size		Optional blinds	+150 / - 150 psf			TDI Approval
12" x 12"		between Glass				ASTM
* The 9020 Avail with different top & bottom rails to match up with other WinDoor products						A.T.F.P Bomb Blast

9020 Series

Fixed Architectural Shapes Windows - Impact & Non - Impact



Thermally Broken Aluminum Operable Windows

9400 Series - Single Hung Window - Impact & Non - Impact

Max Size	Frame Depth	Glazing	Performance	Water	Frame Options	Certifications
54" x 102"	3 1/4 inches	Insulated	Non-Impact Up to	Performance	Equal Leg - Yes	Miami-Dade NOA
54" x 76"		Non-Impact	+100 / - 160 psf	15 lbs	Fin Frame - Yes	Florida Product
54" x 78"		And LM & SM	Impact Up to		Flange Frame - Yes	Approval
Minimum Size		Impact	+100 / - 160 psf			TDI Approval
18" x 36"						ASTM

9470 Series - Horizontal Roller Window Wall System - Impact & Non - Impact

Max Size	Frame Depth	Glazing	Performance	Water	Frame Options	Certifications
112" x 64"	3 1/4 inches	Insulated	Non-Impact Up to	Performance	Equal Leg - Yes	Miami-Dade NOA
1/4 / 1/2 / 1/4		Non-Impact	+100 / - 135 psf	15 lbs	Fin Frame - Yes	Florida Product
or		And LM & SM	Impact Up to		Flange Frame - Yes	Approval
1/3 / 1/3 / 1/3		Impact	+100 / - 135 psf			TDI Approval
						ASTM

Thermally Broken Aluminum Terrace Door

9050 Series - Single Terrace Door - Impact & Non - Impact

Max Size	Frame Depth	Glazing	Performance	Water	Frame Options	Certifications
46" x 120"	4 9/16 inches	Single Glazed &	Non-Impact Up to	Performance	Equal Leg - Yes	Miami-Dade NOA
Minimum Size		Insulated	+120 / - 150 psf	Std Sill		Florida Product
28" x 72"		Non-Impact	Impact Up to	In-swing 15 lbs		Approval
		And LM Impact	+120 / - 150 psf	Out-swing 20 lbs		TDI Approval
		Optional blinds		Low Sill 12 lbs		ASTM
		between Glass				A.T.F.P Bomb Blast

9050 Series - Doubles Terrace Door - Impact & Non - Impact

Max Size	Frame Depth	Glazing	Performance	Water	Frame Options	Certifications
76" x 120"	4 9/16 inches	Single Glazed &	Non-Impact Up to	Performance	Equal Leg - Yes	Miami-Dade NOA
Minimum Size		Insulated	+70 / - 70 psf	Std Sill 15 lbs		Florida Product
54" x 72"		Non-Impact	Impact up to	Low Sill 4.5 lbs		Approval
		And LM Impact	+90 / - 90 psf			TDI Approval
		Optional blinds				ASTM
		between Glass				

Portfolio Detailed Specs

Thermally Broken Aluminum Operable Windows

9060 Series - Casement Window - Impact & Non - Impact

Max Size	Frame Depth	Glazing	Performance	Water	Frame Options	Certifications
Single Vent 37" x 84"	3 1/4 inches	Single Glazed & Insulated	Impact & Non-Impact	Performance Single 30 lbs	Equal Leg - Yes Fin Frame - Yes	Miami-Dade NOA Florida Product
Twin Vent 74" x 72"		Non-Impact And LM Impact	Single +100 / - 150 Twin +100 / - 120	Twin 15 lbs	Flange Frame - Yes	Approval TDI Approval ASTM
Minimum Size Washability Hinge 18" x 24" Egress Hinge 22" x 19"						

9066 Series - Awning Window - Impact & Non - Impact

Max Size	Frame Depth	Glazing	Performance	Water	Frame Options	Certifications
Single Vent 54" x 36"	3 1/4 inches	Single Glazed & Insulated	Impact & Non-Impact	Performance 20 lbs	Equal Leg - Yes Fin Frame - Yes	Miami-Dade NOA Florida Product
Twin Vent 108" x 36"		Non-Impact And LM Impact	Single & Twin Up To +100 / - 150 psf		Flange Frame - Yes	Approval TDI Approval ASTM
Minimum Size 18" x 18"						

9063 Series - Fixed Window - Impact & Non - Impact

Max Size	Frame Depth	Glazing	Performance	Water	Frame Options	Certifications
60" x 120" 108" x 60"	3 1/4 inches	Single Glazed & Insulated	Impact & Non-Impact	Performance 30 lbs	Equal Leg - Yes Fin Frame - Yes	Miami-Dade NOA Florida Product
Minimum Size 18" x 18" Inside dimensions		Non-Impact And LM Impact	Single + 135 / -135 Factory Twin + 150 / - 150		Flange Frame - Yes	Approval TDI Approval ASTM

Thermally Broken Aluminum Sliding Glass Door

9100 Series - Impact & Non - Impact Any Panel Configuration including Pockets - Unlimited Number of Panels - bypass 90 & 135 Degree Corner Doors

Sill Depth	Max Panel Size	Glazing	Riser Water Performance	Performance	Certifications
2-track 5- 7/8"	5 feet wide x	Insulated Non-Impact	1 3/4" = 6.75 Lbs	Non-Impact	Miami-Dade NOA
3-track 8-7/8"	12 feet high	Insulated LM	2 1/4" = 9 lbs	& Impact	Florida Product Approval
4-track 12"		& SM Impact	3" = 12 lbs	Up to	TDI Approval
			3 1/2" = 15 lbs	+125 / - 150 psf	ASTM
			4 1/4" = 18 lbs		

Thermally Broken Aluminum Lift & Slide Door

9000 Series - Impact & Non - Impact Any Panel Configuration

Sill Depth	Max Panel Size	Glazing	Water Performance	Performance	Certifications
1-track 2- 3/4"	6 feet wide x	Insulated Non-Impact	10.5 Lbs	Non-Impact	Miami-Dade NOA
2-track 5-7/8"	12 feet high	Insulated LM		& Impact	Florida Product Approval
3-track 9"		& SM Impact		Up to	TDI Approval
				+70 / -70 psf	ASTM

To find out more about WinDoor or to find a
Authorized Dealer go to...

www.WinDoorInc.com



*WinDoor reserves the right to change materials
design and or construction without notice
or liability.*

Portfolio Detailed Specs

Vinyl Operable Windows

V-100 Series - Tilt & Turn Window - Impact & Non - Impact

Max Vent Size	Frame Depth	Glazing	Performance	Water	Frame Options	Certifications
Single 54" x 80"	2 3/4 inches	Non-Impact 1" std Triple Glazed 1 1/2"	Non-Impact +130 / - 150 psf	Performance 30 lbs	Equal Leg - Yes Fin Frame - Yes Flange Frame - Yes	Miami-Dade NOA Florida Product Approval TDI Approval ASTM A.T.F.P Bomb Blast
Horizontal Twin 84" x 80"		Impact 1" std Opt 1 1/4" Triple Glazes 1 / 1/2"	Impact +100 / - 130 psf			
Vertically Stacked 54" x 158"		Optional blinds between Glass				
Minimum Size 18" x 25" Single - Fixed Vent 24" x 14" Single						

V-101 & V-102 Series - Tilt & Turn Window - Non - Impact

Max Vent Size	Frame Depth	Glazing	Performance	Water	Frame Options	Certifications
Single 48" x 78"	2 3/4 inches	Non-Impact 1" std Triple Glazed 1 1/2"	Non-Impact Single Vent	Performance 15 lbs	Equal Leg - Yes Fin Frame - Yes Flange Frame - Yes	Florida Product Approval TDI Approval ASTM
Twin 84" x 78"		Optional Blinds between Glass	+70 / - 100 psf Twin Vent +70 / - 80 psf			
Minimum Size Single 18" x 25" Fixed Single Vent 24" x 14"						

V-HY-Vent Series - Hopper HY-VENT Window Impact & Non - Impact

Max Vent Size	Frame Depth	Glazing	Performance	Water	Frame Options	Certifications
48" x 108"	2 3/4 inches	Non-Impact 1" std Triple Glazed 1 1/2"	Non-Impact +70 / - 70 psf	Performance 15 lbs	Equal Leg - Yes Fin Frame - Yes Flange Frame - Yes	Miami-Dade NOA Florida Product Approval TDI Approval ASTM
Operating Arm Can open up to 3 windows at one time. Eyebrow & Trapezoids included. Minimum Size 24" x 14"		Impact 1" std Opt 1 1/4" Triple Glazes 1 / 1/2" Optional Blinds between Glass	Impact Up to +100 / - 130 psf			

Vinyl Fixed Windows

V-130 Series - Fixed Window Field Glazed - Impact & Non - Impact

Max Vent Size	Frame Depth	Glazing	Performance	Water	Frame Options	Certifications
Single 54" x 84"	2 3/4 inches	Non-Impact 1" std Triple Glazed 1 1/2"	Impact & Non-Impact	Performance 30 lbs	Equal Leg - Yes Fin Frame - Yes Flange Frame - Yes	Miami-Dade NOA Florida Product Approval TDI Approval ASTM
60" x 60"		Impact 1" std Opt 1 1/4" Triple Glazes 1 / 1/2"	+80 / - 80 psf			
Horizontal Triple 162" x 84"		Optional Blinds between Glass				
Minimum Size Single - 18" x 18" / Triple 72" x 18"						

Vinyl Terrace Door

V-800 Series - Single Terrace Door - Impact & Non - Impact

Max Size	Frame Depth	Glazing	Performance	Water	Frame Options	Certifications
Single 40" x 98"	2 3/4 inches	Non-Impact & Impact 1" Insulated Triple Glazed 1 1/2"	Non-Impact +90 / -90 psf Impact +90 / -90 psf	Performance Lower Riser 14 lbs Standard Riser 25 lbs	Equal Leg - Yes Fin Frame - Yes Flange Frame - Yes	Miami-Dade NOA Florida Product Approval TDI Approval ASTM
Minimum Size 26" x 72"		Insulated LM Impact Optional Blinds				

HIGH PERFORMANCE DOORS & WINDOWS

PART OF THE PGT INNOVATIONS FAMILY OF BRANDS

WinDoor®

HIGH PERFORMANCE DOORS & WINDOWS



www.WinDoorInc.com

Or Simply Scan the QR code into your phone and go directly to our website...



Visit us at 7500 Amsterdam Drive
Orlando, Florida 32832
407.481.8400

Also Find Us On....

 houzz

